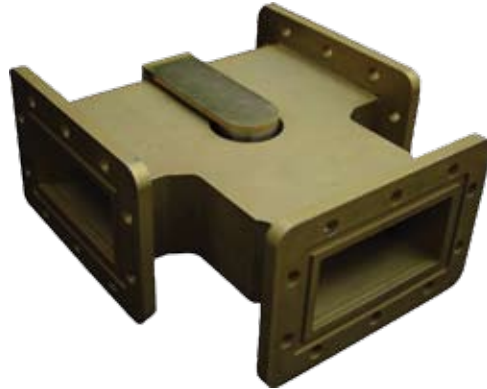


WAVEGUIDE 3 PORT S-BAND CIRCULATOR

MODEL
3WR284NA

low loss
“Uses a novel
technique to
enhance power
handling
performances”

Renaissance Electronics Corporation developed this novel S-Band 3 port junction circulator in WR284 waveguide. This circulator is capable of handling high power levels and can be extended up to 50 kW/5kW using forced air cooling. The circulator uses a novel technique to enhance power handling performances and yet still maintain its low loss characteristics. This enables an extremely compact, lightweight circulator to be realized for a given power handling, state-of-the-art capability.



Characteristics

FREQUENCY BAND	2.7-2.9 GHz
PEAK POWER	30 kW
AVERAGE POWER	3 kW
VSWR	1.15:1 MAX
LOSS	0.25 dB MAX
ISOLATION	20 dB MIN

Markets

MILITARY	GROUND BASE AND SHIP BORNE RADAR
SPACE	COMMUNICATION AND TELEMETRY
COMMERCIAL	AIR TRAFFIC CONTROL

Features

· ALUMINUM ALLOY	· PROVIDES COMPACT AND LIGHTWEIGHT DESIGN
· Low VSWR	· BETTER MATCH TO THE TRANSMITTER
· HIGH ISOLATION	· MINIMIZES INTERACTIONS
· FERRITE RESONATORS	· HANDLES BOTH PEAK AND AVERAGE POWER LEVELS

Benefits



12 LANCASTER COUNTY ROAD
HARVARD, MA 01451
978-772-7774
WWW.REC-USA.COM

The New Thinking in Wireless Technology