

WLL APPLICATIONS

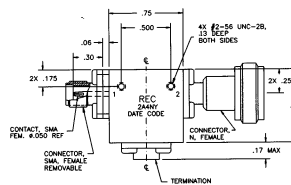
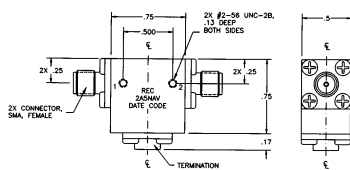
COAXIAL ISOLATORS
3.4 GHZ TO 3.6 GHZ

MODEL #2A5NAV IS A HIGH PERFORMANCE PRODUCT, PERFECTED FOR WIRELESS LOCAL LOOP APPLICATIONS. WITH OPTIONAL SMA REMOVABLE OR FEMALE CONNECTORS, HIGH ISOLATION (25 DB), AND LOW REFLECTED POWER (10 WATTS), THIS COAXIAL ISOLATOR ENABLES A SUPPLIER TO MAINTAIN LOW COST PRODUCTION WHILE PROVIDING TECHNOLOGY ACCESS TO THE RIGHT CUSTOMER AT THE MOST REMOTE LOCATION.

COAXIAL ISOLATORS
3.4 GHZ TO 4.2 GHZ

MODEL #2A4NY IS A MEDIUM POWER COAXIAL ISOLATOR THAT OFFERS ADAPTABLE INTERFACES WITH REMOVABLE RF CONNECTORS. OPERATES AT THE FULL RANGE OF WLL FREQUENCIES.

TYPICAL PACKAGE DIMENSIONS



MODEL NUMBER	FREQUENCY GHz	ISOLATION dB, MIN	INSERTION LOSS dB, MAX	VSWR MAX	TERMINATION (WATTS)	FORWARD POWER (CW)	TEMPERATURE RANGE
2A5NAV	3.400 - 3.600	25	0.200	1.150:1	10	10 WATTS	-45OC TO +85OC
2A4NY	3.400 - 4.200	20	0.300	1.250:1	1	1 WATT	0OC TO +60OC

SPECIFICATIONS SUBJECT TO CHANGE WITHOUT NOTICE.